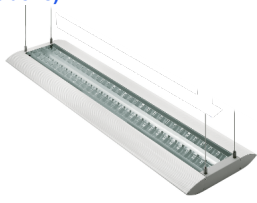
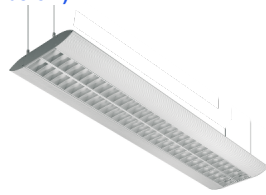


Sedna T5

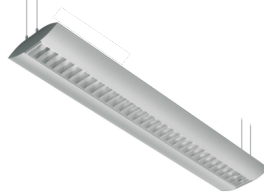
Sedna Twin (view from above)



Sedna Twin (view from below)



Sedna Single



Sedna Two Wire



This is a suspended up-light and down-light aluminium extruded luminaire designed for T5 tubes.

The end caps are finished in RAL 9007 colour. The downwards light element is controlled via a VDT Satin (semi-specular) aluminium louvre and the upward light is via a transparent Perspex sheet.

The fitting comes complete with either a **2 or 4 wire suspension kit**, please see images for differing types of suspensions and also please specify requirements at the time of ordering. The suspension wires are supplied in 1.25m lengths as standard but longer lengths available to special order.

The Sedna range is also available in a **Linkable** variant.

Please refer all 80w enquiries.

Options - Specular louvres available to special order.

Emergency - Three hour maintained integral emergency conversion available for most sizes, where the body is counter balanced to account for the extra weight of the inverter and battery cells. Please enquire before ordering. Details [here](#).

Ordering details and dimensions (mm)

<u>Catalogue number</u>	<u>Lamps</u>	<u>A</u>	<u>B</u>	<u>C</u>
SED 312/128 T5/SATIN/+	1 x 28w T5	250	1188	55
SED 312/154 T5/SATIN/+	1 x 54w T5	250	1188	55
SED 315/135 T5/SATIN/+	1 x 35w T5	250	1488	55
SED 315/149 T5/SATIN/+	1 x 49w T5	250	1488	55
SED 312/228 T5/SATIN/+	2 x 28w T5	330	1188	55
SED 312/254 T5/SATIN/+	2 x 54w T5	330	1188	55
SED 315/235 T5/SATIN/+	2 x 35w T5	330	1488	55
SED 315/249 T5/SATIN/+	2 x 49w T5	330	1488	55
SED 315/280 T5/SATIN/+	2 x 80w T5	330	1488	55

Fixing Centres

Fitting	4 Wire Suspensions	2 Wire Suspensions
1x28/54w	62mm x 1159mm	1159mm apart
1x35/49w	62mm x 1459mm	1459mm apart
2x28/54w	142mm x 1159mm	1159mm apart
2x35/49/80w	142mm x 1459mm	1459mm apart

+ = Control Gear options (Mouse over for legend)

HF
 HF DIG DIM
 HF 1-10v DIM
 DSI and DALI dimming
 E

